



CADET™ 406mm (16") HIGH ELONGATED 13L TOILET

2616 100

- Vitreous china
- Watersaver (13.0 Lpf/2.9 gpf)
- 406mm (16") rim height for accessible and elderly applications
- Elongated siphon action jetted bowl
- Internal trapway area fully glazed 50mm (2") ballpass
- Large 267 x 318mm (10-1/2" x 12-1/2") water surface area
- Close-coupled tank
- Colour-matched trip lever
- Sanitary dam on bowl
- 2 bolt caps
- 100% factory flush tested

Separate Component Parts:

- 3616 000** Bowl
- 4015 130** Unlined Tank

2616 600 with Slotted Rim for Bedpan holding

Separate Component Parts:

- 3616 P00** Bowl with slotted rim
- 4015 130** Unlined Tank

2616 500 with Lined Tank

Separate Component Parts:

- 3616 000** Bowl
- 4015 500** Lined Tank

Nominal Dimensions:

762 x 495 x 813mm (30" x 19-1/2" x 32")

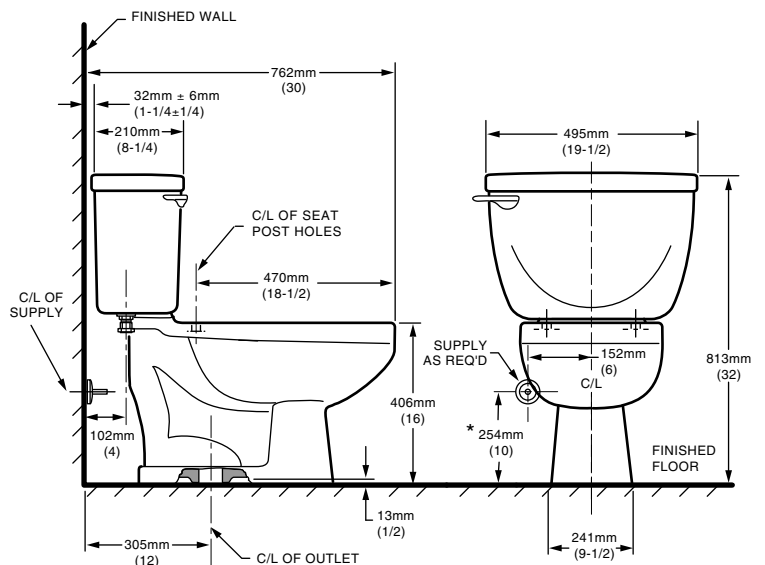
4015 600 Unlined Tank with Bolted Cover

4015 700 Lined Tank with Bolted Cover

Compliance Certifications -

Meets or Exceeds the Following Specifications:

- ASME A112.19.2M (and 19.6M)
- CAN/CSA B45 series
- 1995 National Building Code, section 3.7 and CAN/CSA-B651-M90 and OBC 3.7.



NOTES:

THIS TOILET IS DESIGNED TO ROUGH-IN AT A MINIMUM DIMENSION OF 305MM (12") FROM FINISHED WALL TO C/L OF OUTLET.
SUPPLY NOT INCLUDED WITH FIXTURE AND MUST BE ORDERED SEPARATELY.
* DIMENSION SHOWN FOR LOCATION OF SUPPLY IS SUGGESTED.
FOR ADDITIONAL INFORMATION REFER TO INSTALLATION INSTRUCTIONS SUPPLIED.
IMPORTANT: Dimensions of fixtures are nominal and may vary within the range of tolerance established by ANSI Standard A112.19.2

These measurements are subject to change or cancellation. No responsibility is assumed for use of superseded or voided pages.



● When installed so top of seat is 432 to 483mm (17" to 19") from the finished floor.
MEETS THE AMERICAN DISABILITIES ACT GUIDELINES AND ANSI A117.1 REQUIREMENTS FOR ACCESSIBLE AND USEABLE BUILDING FACILITIES- CHECK LOCAL CODES.

To Be Specified

- Colour:
- Seat: American Standard #5324 019 "Rise and Shine" (with easy to clean lift-off hinge system) solid plastic closed, elongated front seat with cover. See price page.
- Alternate Seat:
- Supply with stop: