

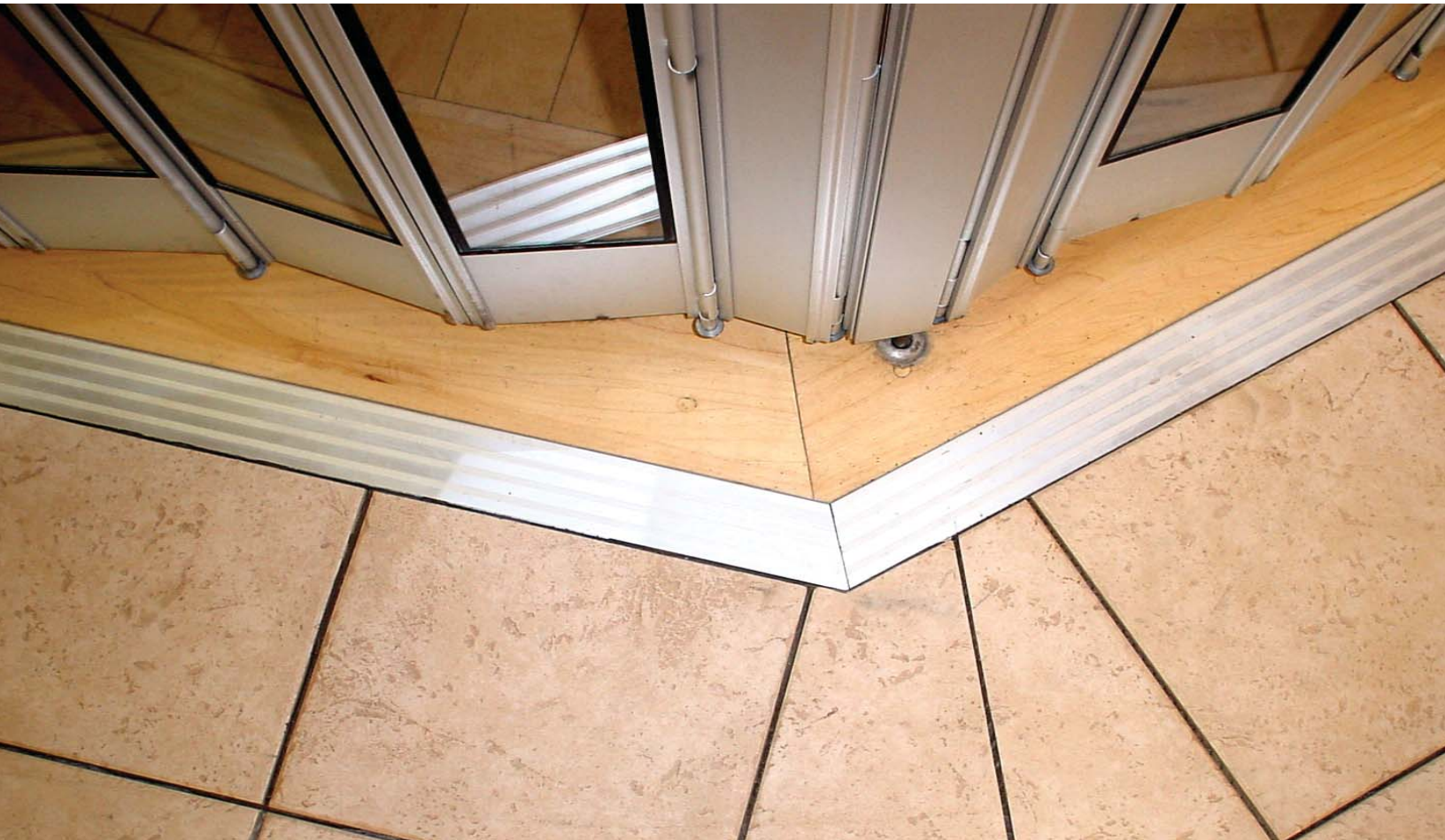


PROFILE OF INNOVATION



Commercial and Accessibility Product Overview





Profiles for Floors

Because ceramic and stone tiles are inherently brittle, their exposed edges can chip and crack if left unprotected. Transitions between floor surfaces and at thresholds are particularly vulnerable to damage. Schluter®-Systems offers a variety of profiles to provide edge protection and transitioning at thresholds and between adjacent surfaces, resulting in durable, maintenance-free tiled coverings.

Schluter® profiles are available in a variety of shapes, sizes, materials, and finishes.



Technical Note: Accessibility requirements regarding transitions between surfaces of different heights:

- Up to 6 mm (1/4") - no special requirements
- 6 mm (1/4") to 12.5 mm (1/2") - slope ratio, 1:2
- More than 12.5 mm (1/2") - slope ratio, 1:12



RENO-V

Schluter®-RENO-V is designed to protect tile edges and provide a smooth transition between tile coverings and floor coverings at lower elevations. The profile features a movable transition arm that allows the profile to adjust to the height of the adjacent floor covering via a ball-and-socket joint and eliminates trip hazards. RENO-V in all materials features an integrated joint spacer that establishes a defined joint cavity between the tile and the profile.



RENO-RAMP



Schluter®-RENO-RAMP is designed to protect tile edges and provide a smooth transition between tile coverings and floor coverings at lower elevations or finished concrete. The sloped surface eliminates trip hazards and allows easy access for wheel carts. RENO-RAMP features an integrated joint spacer that establishes a defined joint cavity between the tile and the profile.

Note: Sizes 15 mm (9/16") and 20 mm (3/4") are not accessibility compliant



RENO-U



Schluter®-RENO-U is designed to protect tile edges and provide a smooth transition between tile coverings and floor coverings at lower elevations or finished concrete. The sloped surface eliminates trip hazards and the leading edge of the profile abuts the lower surface covering. RENO-U in anodized aluminum features an integrated joint spacer that establishes a defined joint cavity between the tile and the profile.

Note: Sizes 20 mm (3/4") and 17.5 mm (11/16") are not accessibility compliant.



Profiles for Walls

Ceramic and stone tiles are durable, hygienic, heat resistant, and easy to maintain, representing the ideal surface covering for walls in commercial/industrial applications. Schluter®-Systems offers various finishing and edge-protection profiles for walls that offer increased design flexibility because they can be integrated with any field tile to create a beautiful, durable installation.



ECK-E

Schluter®-ECK-E is a stainless steel edging profile for outside corners of tiled walls that offers excellent edge protection against mechanical stresses in commercial/industrial applications. The profile produces a radiused edge along the outside wall corner for a clean, decorative finish. ECK-E is installed simultaneously with the tile.





ECK-K

Schluter®-ECK-K is a stainless steel edging profile for outside corners of tiled walls that offers excellent edge protection against mechanical stresses in commercial/industrial applications. The profile produces a radiused edge along the outside wall corner for a clean, decorative finish. ECK-K is subsequently bonded to the outside corners of existing installations. As such, ECK-K can be installed as a repair so that existing, damaged corners do not have to be replaced.



RONDEC

Schluter®-RONDEC is a finishing and edge-protection profile for tiled edges and outside corners of tiled surfaces. The reveal of the profile forms a symmetrically rounded corner along the surface edge. RONDEC allows for color coordination with tile and grout and the creation of interesting accents in decorative designs.

Matching inside and outside corners are available.



QUADEC

Schluter®-QUADEC is a finishing and edge-protection profile for tiled edges and outside corners of tiled surfaces. The reveal of the profile forms a square outer corner along the surface edge. QUADEC can also be used as an accent within tile fields on both floors and walls. QUADEC allows for modern decorative design and interesting contrasts.

Matching inside and outside corners as well as end caps are available.





Profiles for Stairs

Tiled stairs edges that do not utilize appropriate trim pieces are vulnerable to chipping and breaking and create a slip hazard, especially in exterior applications. Schluter® stair-nosing profiles protect exposed tile edges and improve safety on tiled stairways by providing slip-resistant wear surfaces and increased visibility in both residential and commercial applications.

Stair specifications:

- Closed Riser
- Maximum rake of 60%
- Uniform riser height
- Maximum nosing projection of 38 mm with a bevel or radius between 6 mm and 10 mm and no abrupt underside
- Color contrasting, slip resistant nosings 40 - 60 mm deep
- Minimum light level of 100 lux
- Detectable warning surface at the top of the stairway



TREP-E



Schluter®-TREP-E is designed to protect tiled stair edges and provide an easily visible, slip-resistant wear surface for durable, safe, and visually appealing stair-nosing design. The profiles are made of stainless steel with an integrated non-slip tread, making them suitable for interior and exterior use in areas subjected to heavy foot-traffic, such as offices or public buildings.

The exposed surface of TREP-E is:
1-3/16" (30 mm)

Matching end caps are available.



TREP-G

Schluter®-TREP-G is designed to protect tiled stair edges and provide an easily visible, slip-resistant wear surface for durable, safe, and visually appealing stair-nosing design. The profile is made of stainless steel, making them suitable for interior and exterior use in areas subjected to heavy foot-traffic, such as offices or public buildings. The surface features a self-adhesive, non-slip tread with an embedded mineral grain coating, which is available in a variety of colors and can be replaced in case of damage or wear.

The exposed surface of TREP-G is available in two sizes:
1-3/16" (30 mm)
2-5/32" (55 mm)

Matching end caps are available.



TREP-SE/-S/-B



Schluter®-TREP-SE/-S/-B are designed to protect tiled stair edges and provide an easily visible, slip-resistant wear surface for durable, safe, and visually appealing stair-nosing design. They are suitable for use in areas subjected to heavy foot-traffic, such as offices or public buildings. The profiles feature a trapezoid-perforated anchoring leg made of stainless steel (-SE) or aluminum (-S and -B), with a slip-resistant, thermoplastic rubber wear surface. The tread surface is available in a variety of colors and can be replaced in case of damage or wear.

The exposed surface of TREP-SE/-S is:
1-1/32" (26 mm)

The exposed surface of TREP-B is:
2-1/16" (52 mm)

Matching end caps are available.



Movement joint and cove-shaped profiles

An installed ceramic tile floor is rigid by nature and similar in physical characteristics to a large sheet of glass. This is particularly true with today's large-format tiles and narrow joint design. Stress buildup occurs within large surfaces and at perimeters, causing cracking and loosening of the tile covering. In addition, caulking is often used to create a movement zone. Unfortunately, caulking material has a limited lifespan and eventually breaks down, leaving the tiled edges exposed and vulnerable to damage.

Expansion joints must be incorporated within large surfaces, at doorsills, and at transitions to walls and other restraining structures to allow movement and thus reduce stress buildup. Schluter®-Systems' prefabricated movement joint profiles eliminate the need for caulking, protect tile edges, and prevent sound bridges and surface water penetration, resulting in a permanent, maintenance-free installation. The family of Schluter®-DILEX prefabricated movement joints includes a variety of shapes, sizes, and materials to suit different applications.



DILEX-KSN

Schluter®-DILEX-KSN is a surface joint profile with stainless steel, solid brass, or aluminum anchoring legs that protect tile edges and a soft thermoplastic rubber movement zone that separates individual fields in the tile covering and forms the visible surface. The movement zone is available in different colors to match the grout and can be replaced if damaged. DILEX-KSN in stainless steel offers secure edge protection for surfaces exposed to heavy-duty commercial traffic (e.g., warehouses, production facilities, or shopping malls).

7/16" (11 mm)-wide, soft thermoplastic rubber movement zone



DILEX-EDP

Schluter®-DILEX-EDP is a stainless steel surface joint profile accommodates horizontal movement, protects tile edges and separates individual fields in the tile covering. DILEX-EDP is particularly suited for tile surfaces subject to heavy use, including areas exposed to continuous vehicular traffic. The profile is, therefore, suited for use in product plants, warehouses, shopping centers, and underground parking garages, or for floor surfaces maintained with cleaning machines.

15/32" (12 mm)-wide stainless steel tongue-and-groove connection



DILEX-BWB

Schluter®-DILEX-BWB is a surface joint profile with rigid PVC anchoring legs that protect tile edges and a soft CPE movement zone that separates individual fields in the tile covering and forms the visible surface. The movement zone is available in different colors to match the grout. DILEX-BWB is suitable for residential to medium-duty commercial applications subject to light mechanical loads (e.g., offices and stores).

3/8" (10 mm)-wide, soft CPE movement zone



DILEX-KSA

Schluter®-DILEX-KSA is a perimeter joint profile with a stainless steel or aluminum anchoring leg and soft thermoplastic rubber movement zone that isolates the tile covering from fixed building elements (e.g., window and door frames). The movement zone is available in different colors to match the grout and can be replaced if damaged. The profile also features a self-adhesive strip that allows it to bond to the fixed building elements.

3/8" (10 mm)-wide, soft thermoplastic rubber movement zone



DILEX-BWA

Schluter®-DILEX-BWA is a perimeter joint profile with a rigid PVC anchoring leg and a soft CPE movement zone that isolates the tile covering from fixed building elements (e.g., bathtubs, shower trays, door and window frames) and forms the visible surface. The movement zone is available in different colors to match the grout. The profile also features a dovetailed channel made of rigid PVC that can be bonded to the fixed building elements.

3/16" (5 mm)-wide, soft CPE movement zone



DILEX-EHK

Schluter®-DILEX-EHK is a stainless steel, cove-shaped profile for inside wall corners, countertop/backsplash transitions and floor/wall transitions in applications where limited movement is expected. DILEX-EHK prevents surface water penetration and meets the maintenance and hygienic requirements of commercial kitchens, bathrooms, food processing plants, or any tiled environment where a sanitary cove base is desired.

23/32" (18.5 mm) radius cove prevents the accumulation of dirt and makes cleaning simple.

Matching inside and outside corners as well as end caps are available.



DILEX-AHK

Schluter®-DILEX-AHK is an anodized aluminum, cove-shaped profile for inside wall corners, countertop/backsplash transitions and floor/wall transitions in applications where limited movement is expected. DILEX-AHK prevents surface water penetration and meets the maintenance and hygienic requirements of commercial kitchens, bathrooms, food processing plants, or any tiled environment where a sanitary cove base is desired.

3/8" (10 mm) radius cove prevents the accumulation of dirt and makes cleaning simple.

Matching inside and outside corners as well as end caps are available.



DILEX-HKW

Schluter®-DILEX-HKW is a PVC cove-shaped profile for inside wall corners and floor/wall transitions in applications where limited movement is expected. DILEX-HKW accommodates wall and floor tiles that are of the same thickness. DILEX-HKW prevents surface water penetration and meets the maintenance and hygienic requirements of commercial kitchens, bathrooms, food processing plants, or any tiled environment where a sanitary cove base is desired.

11/16" (18 mm) radius cove prevents the accumulation of dirt and makes cleaning simple.

Matching inside and outside corners as well as end caps are available.



Barrier-free Showers

There is increasing demand for accessible living spaces. Tiled showers typically feature curbs to retain water in the stall, which can make entry difficult for those with limited mobility, including individuals who need the assistance of wheelchairs. Barrier-free tiled showers eliminate the use of a curb and rely on the slope of the floor to keep water inside the stall, thus improving accessibility. Ideally, the floor will be recessed before installing a sloped mortar bed or the Schluter®-KERDI-SHOWER-ST shower tray to allow an even transition at the door threshold. When recessing the floor is not an option, it is necessary to provide a ramp up into the shower area. The Schluter®-KERDI-SHOWER-ST/-SR tray and ramp can be useful tools in such applications.

Shower specifications:

- Interior clear area of at least 900 mm x 150 mm
- Clear floor area in front of at least 900 mm deep and the same width as the shower
- A roll-in threshold not exceeding 13 mm high with a maximum level slope of 1:2
- A floor drain located outside the shower stall



Photo courtesy of: Reliable Independent Living Services



KERDI-DRAIN

Schluter®-KERDI-DRAIN is a floor drain with an integrated bonding flange that provides a large contact area for a secure connection to the Schluter®-KERDI waterproofing membrane and other bonded waterproofing membranes at the top of the assembly. KERDI-DRAIN is appropriate for both mortar bed and Schluter®-KERDI-SHOWER-ST shower tray applications. The bonding flange is sloped to simplify installation of the mortar bed. KERDI-DRAIN features a fully adjustable grate accommodates a wide range of tile thicknesses: 1/4" (6 mm) to 1-1/4" (32 mm). KERDI-DRAIN is listed by UPC®, CSA, and NSF.

The flange is available in ABS or PVC with a 2" or 3" outlet, or in stainless steel with a 3" no-hub outlet.



KERDI

Schluter®-KERDI is a pliable sheet-applied polyethylene waterproofing membrane and vapor retarder that guarantees uniform thickness. It is covered with an anchoring fleece on both sides to anchor the membrane in thin-set mortar and is suitable for waterproofing in conjunction with tiled surfaces on walls and floors. Schluter®-KERDI is listed by cUPC® and evaluated by ICC-ES (Report No. ESR-2467).



KERDI-BAND

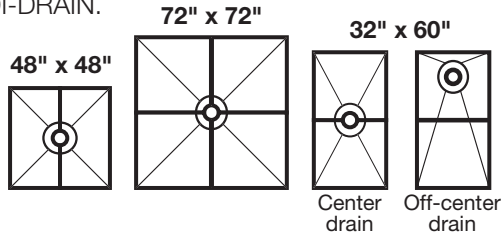
Schluter®-KERDI-BAND is a waterproofing strip used to seal butt joints and floor/wall connections with the Schluter®-KERDI and Schluter®-DITRA membranes.





KERDI-SHOWER-ST

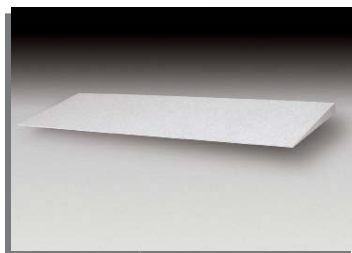
Schluter®-KERDI-SHOWER-ST is a sloped shower tray made of lightweight, expanded polystyrene (PS 40) for constructing mortar-free shower receptors. It is specifically designed to integrate with Schluter®-KERDI-SHOWER-SC, KERDI, and KERDI-DRAIN.



KERDI-SHOWER-SC

Schluter®-KERDI-SHOWER-SC is a light-weight, expanded polystyrene (PS 40) shower curb specifically designed to integrate with Schluter®-KERDI-SHOWER-ST, KERDI, and KERDI-DRAIN.

Dimensions:
48" (122 cm) x 6" (15 cm) x 4-1/2" (11.5 cm)



KERDI-SHOWER-SR

Schluter®-KERDI-SHOWER-SR is a light-weight, expanded polystyrene (PS 40) shower ramp specifically designed to integrate with Schluter®-KERDI-SHOWER-ST, KERDI, and KERDI-DRAIN.

Dimensions:
48" (122 cm) x 15-7/8" (40 cm)
slopes from 1-1/2" (38 mm) to 1/4" (6 mm)



KERDI-SHOWER-KIT

Schluter®-KERDI-SHOWER-KIT is an all-inclusive package containing each of the integrated family of components required to create a maintenance-free, watertight shower assembly without a mortar bed.

Available in all tray sizes, with or without the KERDI-DRAIN.



Helpful Resources

Architectural Binder

A must for your library, this binder contains a complete set of product data sheets, brochures, installation handbooks, articles, and our product specification guide.



Mini-CD

This all-in-one mini disc includes all the content of the architectural binder in electronic format, as well as a complete set of CAD drawings, details for barrier-free showers, and useful links.



To request a complementary architectural binder or mini-CD, please call customer service at 1-800-667-8746.



Spec Wizard

Schluter®-Systems has teamed up with ARCAT to make specifying our products even easier!

To learn about the complete line of Schluter®-Systems products, and to access the Spec Wizard, please visit:

www.schluter.com



P R O F I L E O F I N N O V A T I O N

Schluter Systems L.P. • 194 Pleasant Ridge Road, Plattsburgh, NY 12901-5841 • Tel.: 1-800-472-4588 • Fax: 1-800-477-9783 • e-mail: info@schluter.com
Schluter Systems (Canada) Inc. • 5626 Thimens Blvd., St-Laurent, QC H4R 2K9 • Tel.: 1-800-667-8746 • Fax: 1-514-336-2410 • e-mail: info@schluter.com

www.schluter.com